

HEALTHY FINANCIAL NEWS

Since 1959

SPRING 2025



AUTO LOAN RATES TO SAVE YOU MONEY

rates as low as

4.49% APR*
4-year term w/auto pay

Same rate for new, used, or refinanced autos.



Our auto loan rates beat the competition. Plus, we offer the same auto protection add-ons available at dealerships, but at a lower cost.

*Annual Percentage Rate (APR) is based on a four-year term and requires auto pay. Rate is valid on NEW CHCU loans only, cannot be combined with any other discount, and ends 6/30/2025, but is subject to change without notice.

SPRING LOAN SPECIAL



rates as low as

6.49% APR**
12-month term w/auto pay

Great for those Spring home projects, vacations or everyday expenses.

**Annual Percentage Rate (APR) is based on a 12-month term and requires auto pay. Rate may be higher based on credit history, cannot be combined with any other discount, and ends 6/30/2025, but is subject to change without notice.

**Apply for all loans online at www.chcu.org and complete the entire process with e-Sign.
Be sure to submit your most recent paystub to speed up the approval process.**

SPRING BLOOMING MEMBER REFERRAL PROGRAM

Spring has sprung, refer a family member, or co-worker to CHCU and both are eligible to pick a flower for up to \$100 in cash!

Everyone's a winner!

All new members must meet CHU eligibility requirements. Promotion runs from 4/1/2025-6/30/25.



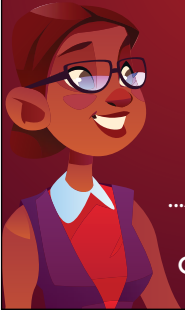
DID YOU KNOW...

...We are open until 6 pm on Thursdays!

...You can make your Loan Payments online?

Click on the **PAY YOUR LOAN** button at chcu.org.

...All family members are eligible for CHCU Membership?



HOME EQUITY LOAN, MAKING DREAMS POSSIBLE

Use the equity in your home for those large expenses such as home renovations, weddings, college

Rates as Low as
5.25% APR*
5-year term w/auto pay

- No Closing Costs
- LOW, FIXED Rate
- Use funds for your home project, education or a dream vacation



*Annual Percentage Rate (APR) is based on a 60-month term and requires auto pay. Rate may be higher based on credit history, cannot be combined with any other discount, and ends 6/30/2025, but is subject to change without notice. Maximum loan to value 80% of appraisal value of property. If loan is cancelled, or equity requirements are not met, applicant is responsible for the appraisal fee.

FIRST MORTGAGES AVAILABLE

CHCU offers a variety of first mortgage programs, including conventional mortgages for 2-4 unit owner occupied homes.

Visit the Real Estate Loans Page at CHCU.ORG to access rates and details.



Main Office

48 Haynes Street
Manchester, CT 06040
Phone: 860-643-3420

866-283-3420

Fax: 860-643-3049

Hours

Monday, Tuesday,
Wednesday, and Friday
9 am to 4 pm
Thursday - 9 am to 6 pm



VACATION CLUB 2025 DISBURSEMENT

Attention Vacation Club members, your club will be automatically transferred to your savings account on Thursday May 8, 2025! Our Vacation Club is a painless way to save for your summer vacation plans! Our Vacation Club runs from May to May, open yours today!

HOLIDAY CLOSINGS

Memorial Day Weekend
Monday, May 26, 2025

Juneteenth National Independence Day
Thursday, June 19, 2025

Independence Day
Friday, July 4, 2025